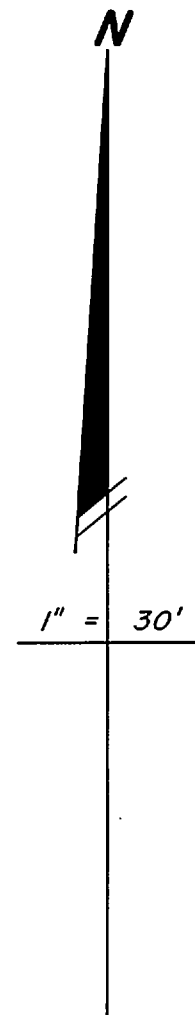
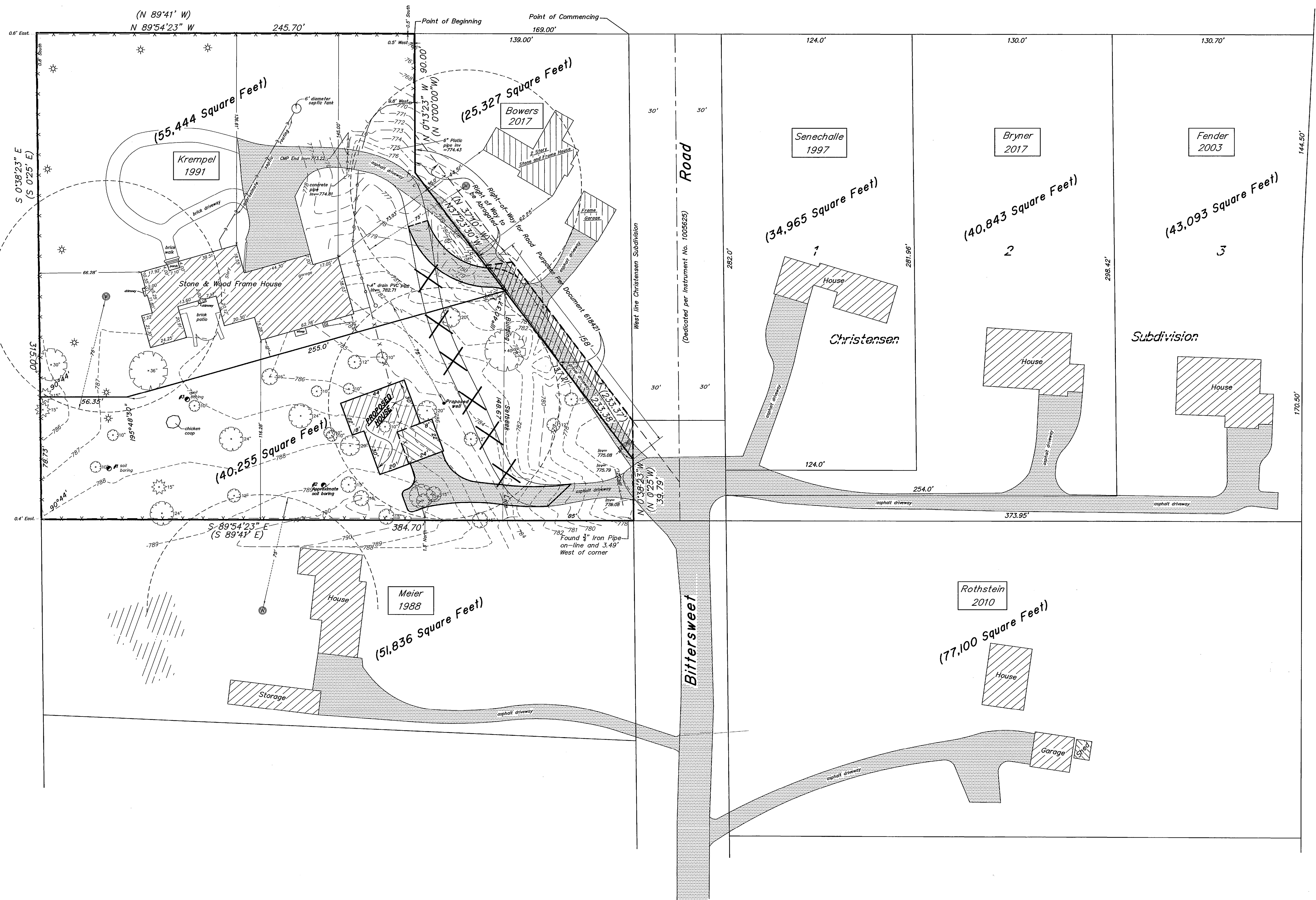


North Bittersweet Road Area  
 Part of the Northeast Quarter of Section 29-40-8  
 St. Charles Township Kane County Illinois



Note:  
 Location of improvements shown hereon  
 derived from Kane County GIS file except  
 boundary survey, topographic information and  
 location of improvements on Krempel property  
 provided by:  
 Johnson-Western Surveying, L.L.C.  
 825 West State Street, Suite 207  
 Geneva, Illinois 60134



Prepared by:  
 Development Properties, Inc.  
 44 White Oak Circle  
 St. Charles, Illinois 60174

September 12, 2019